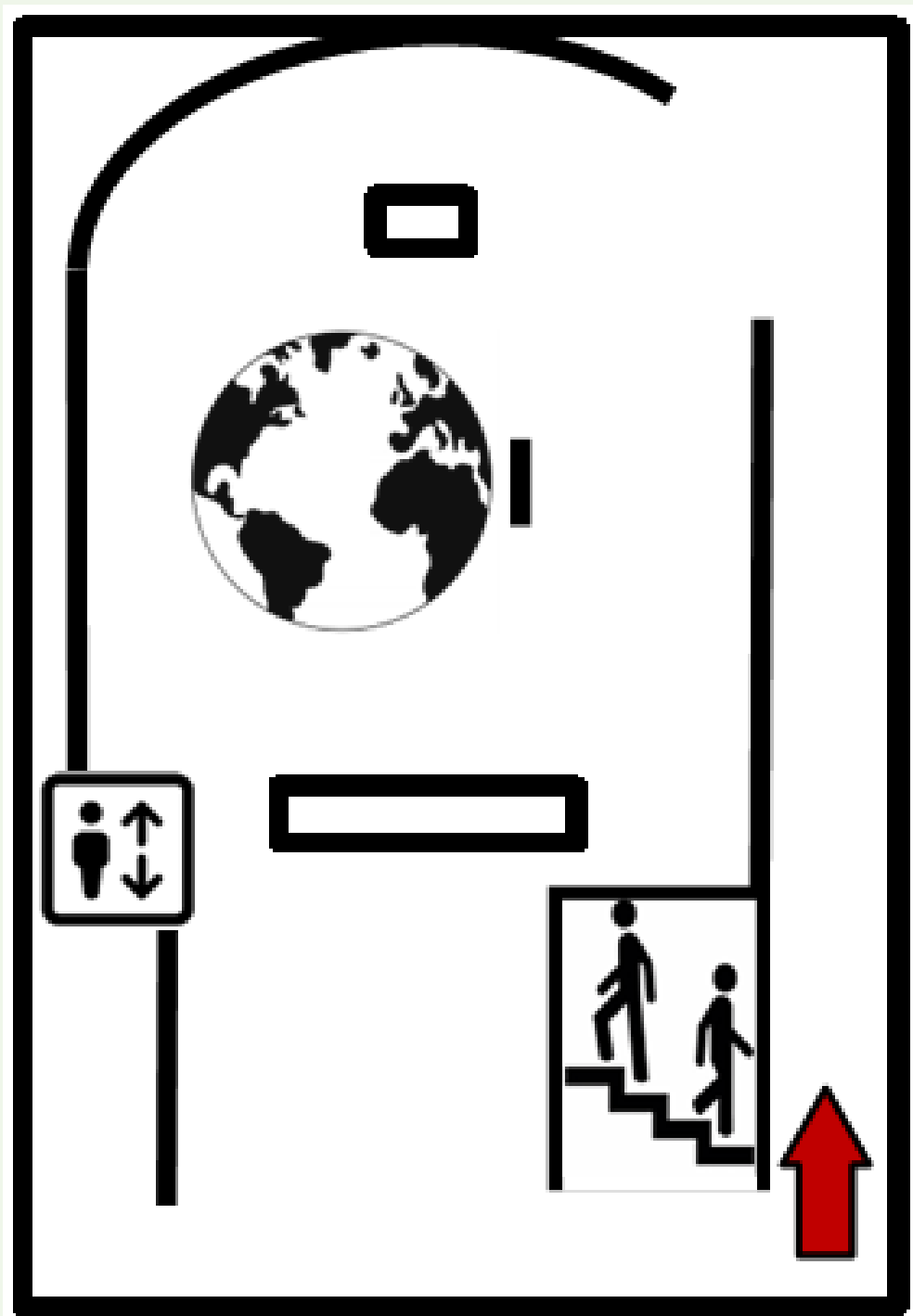


WELCOME TO THE MILL MUSEUM AT THE WORLD OF WINDMILLS

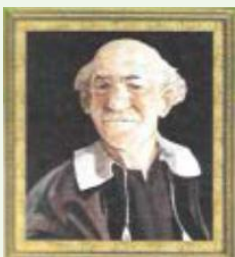
We start at the red arrow,
next to the stairs:



In the past four centuries there were more than 1,200 windmills in this region, at one point even 650 mills at the same time.

There was a huge bustle with lots of noise and pungent smells everywhere. Boats, rafts and ships sailed to and fro.

On the left, you will see the portraits of eight guides from that time. They have many stories to tell.



Cornelis van Uitgeest,
inventor (16th century)

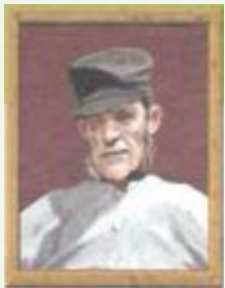


Claes Caescoper,
merchant (17th century)



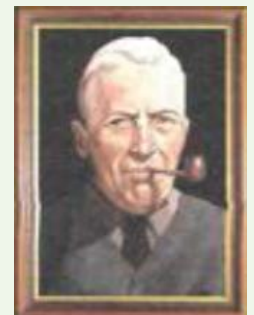
Aafje Gijsen,
rich young lady (18th century)

Evert Smit,
*businessman, merchant and
shipowner (18th-19th century)*



Piet Timmer,
mill worker, labourer (19th century)

Pieter Boorsma,
*millwright and writer
(19th-20th century)*



Frans Mars,
*mill enthusiast and artist
(20th century)*

Tim Doeves,
mill (20th-21st century)



Please walk along the corridor.

Left:

Here you can see various products from the Zaanse mills:

Hemp fiber, flour, snuff, wig powder, mustard, paint pigments, cloth, tobacco, cocoa, spices, wood, oil and paper.



Right:

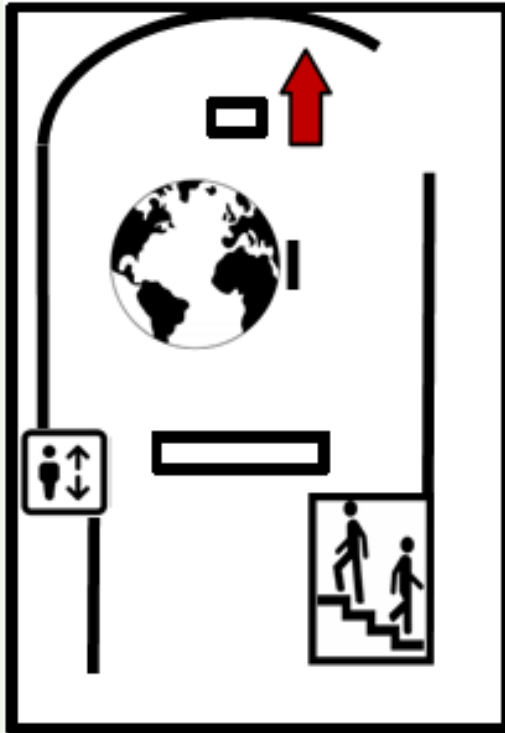
Video wall with vistas of work in the mill.
If you listen you can hear what this 'wooden factory' sounds like.

At the end of the corridor:

Faam (Fame)

Wooden statue with angel that announces something beautiful.





The Mill panorama

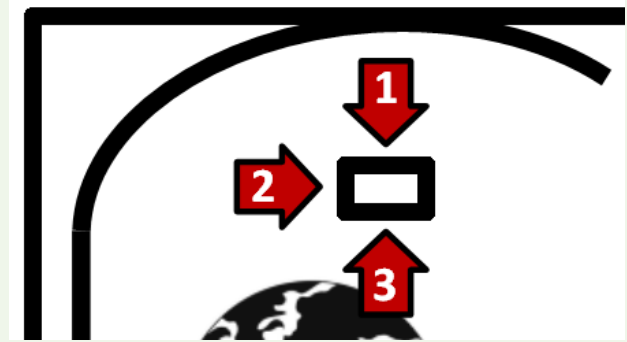
Painted by Frans Mars.

This is a view of the east bank of the waterway the Zaan, with 55 windmills, as it must have looked 200 years ago.

Frans Mars and Pieter Boorsma founded the association De Zaansche Molen in 1925.

Via the screen on the pole you can find the names of each of the 55 mills as well as their function.

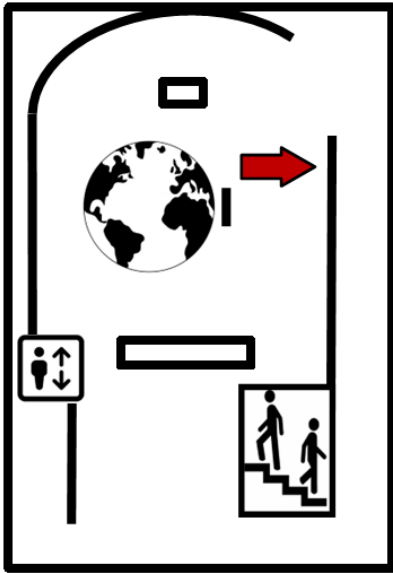
**Facing the
panorama:**



Golden times

There was a big difference between rich and poor.

1. Here we see the Honigs surrounded with objects that show their wealth:
A portrait of Cornelis Honig, a glass yacht, a Turkish tea tent, a chair clock that is typical for this region, a money box, a top hat, a walking stick, a wallet, a painted tobacco box and a tinderbox.
2. Delftware became popular in the period 1650-1750.
3. A bust of Adriaan Honig, and silver models that staff gave as anniversary gifts to the respective company.



language of mills

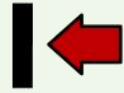
-The red lantern was used for communication between watermills to signal that there was either more drainage to be done or none at all, depending on the water level.



-If there was something very special to celebrate, the mill was set 'beautiful'; for example for an important wedding or a royal visit.

They used 'mooimakersgoed', large wooden figures and baskets that were hung in the sails.

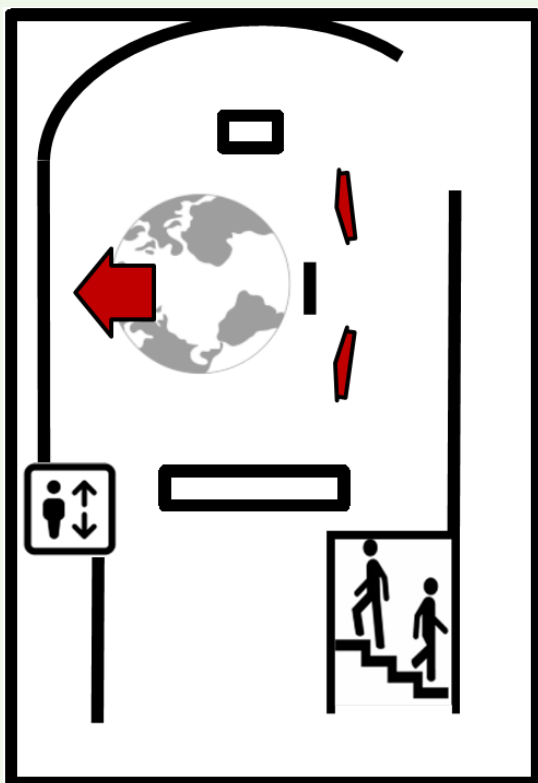
-Two models made of bronze:
One in joy mode
and one in mourning mode



Projection of the globe:

The windmills in the Zaan region, processed raw materials from all over the world into various products.

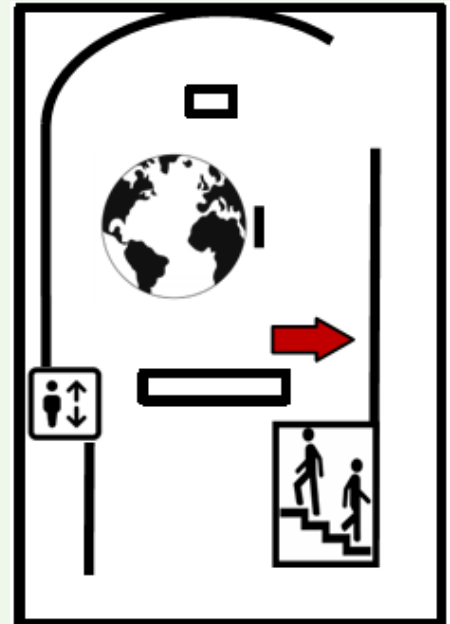
Watch the animations on the big screen and discover what was made of the various raw materials.



Large display case with models:

On two screens opposite the display case, you can find information about the different types of mills.

Transport



The name of the motor ship 'Olievos' (Oil Fox) comes from a real foxtail that was used to remove spilt oil.



Glass yacht
for pleasure boating



A 'molenpluut',
is a rowing boat with which mill workers
crossed the Zaan to and fro their mill.



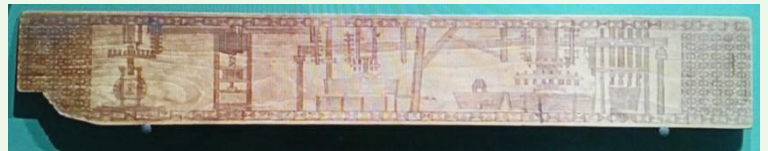
Folk art

- A simple windmill with rotating blades that was placed on a fence for decoration.



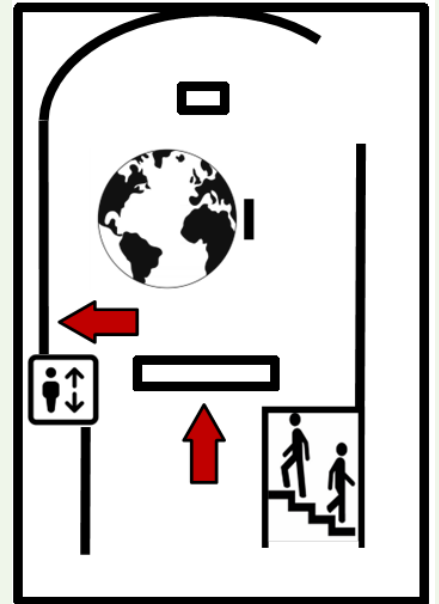
- These wooden models were made for special events and give a realistic picture of what the mills looked like.

- A ruler, decorated with tools that were used in paper mills.



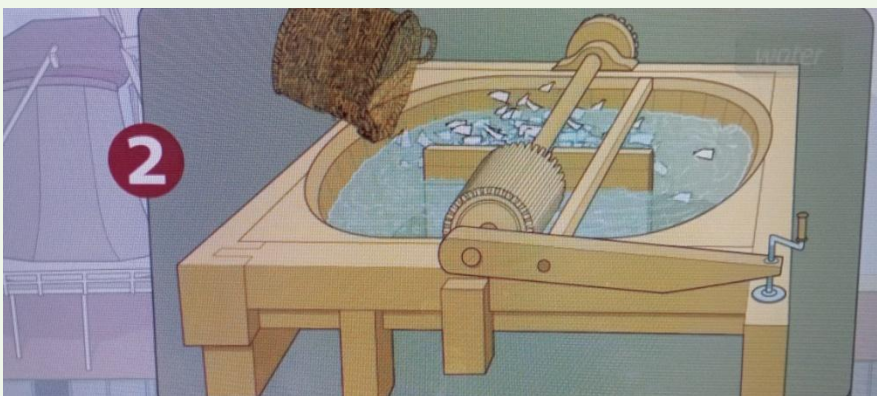
- A wooden satchel, painted with a post mill.

Models: of papermaking



Paper mill De Eendragt

The animation shows you the process of making paper from old clothes.



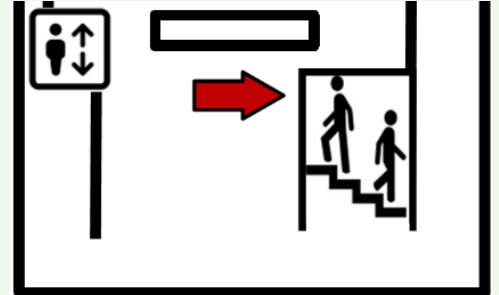
Damage

About a quarter of all windmills in the Zaan region were destroyed by fire.

Left:

-Fire extinguishing tools:

‘Hozer’ from windmill Het Windei



In the event of a fire, the mill staff scooped water out of the ditch with the ‘hozer’ and threw it in the direction of the source of the fire.

Due to the shape of the hozer, it was possible to throw the water under the hood.

In the showcase:

-Leather fire bucket

-Model of paint mill De Uil. The mill was burned by lightning in 1899.

From wind to engine

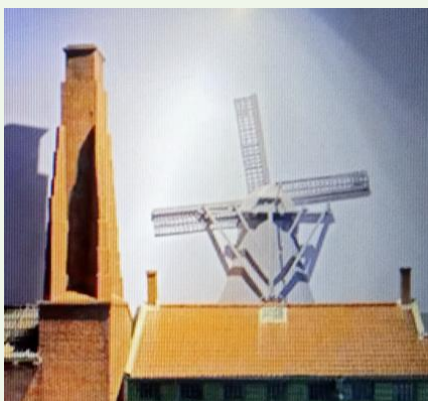
The blades of Pelmolen de Hondeman were demolished during the transition to electricity.



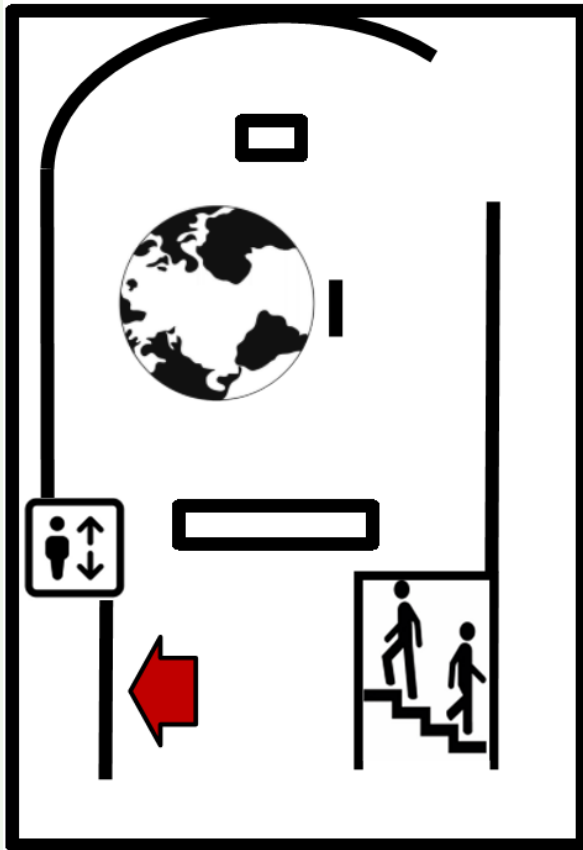
The rest of the mill remained in use.



Sawmill De Vlijt was converted into a steam sawmill.



The steam engine created the strange image of a chimney near a mill.



Difficult times

The life of the millers and the workers was not to be envied. Their working hours were long and the pay was little.

The only pleasures were a pinch of tobacco, a drink of liquor and the annual fair.



Here you can see:

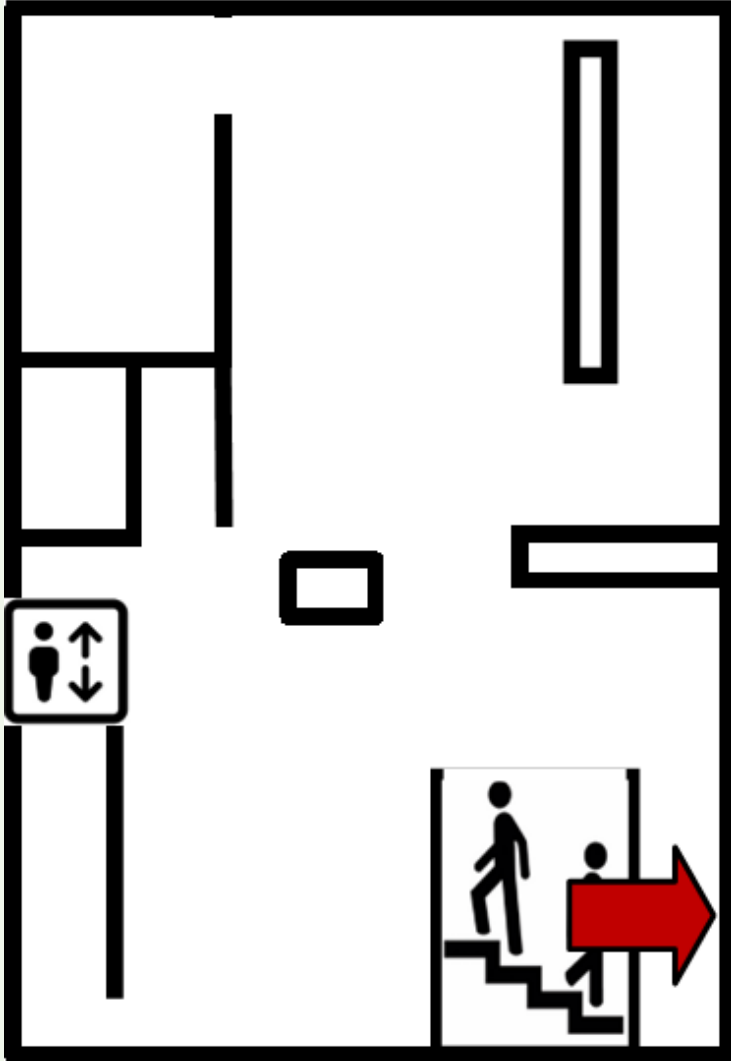
- a push sled with mast and sail to transport goods in case of severe frost.



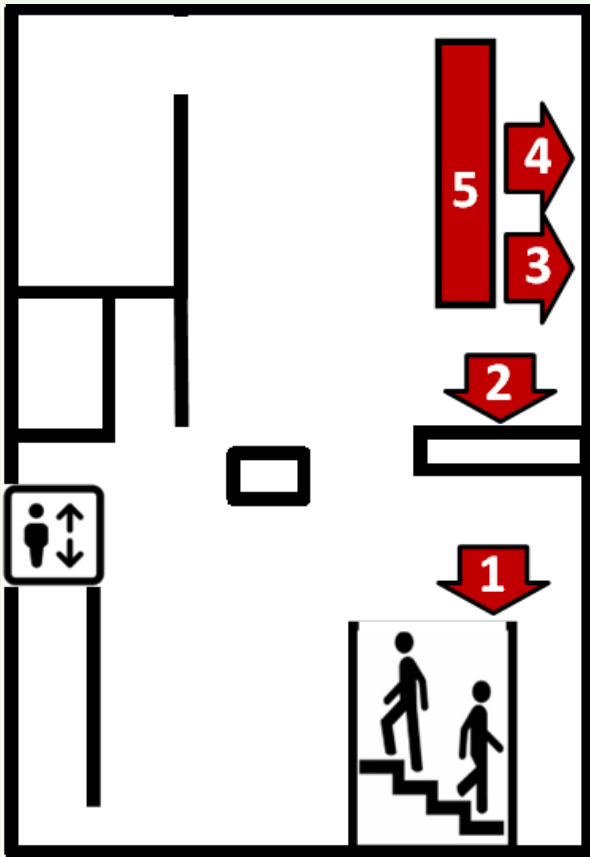
- miller's work clothes
- a small board for carrying peat
- bar sledge
- 'kanis', an iron pot in which the hot food was carried.
- tobacco box with flint and fire hammer
- a mustard tin
- a pot for making lead white
- 'sjacherzak', this was a simple game
- a pocket vial for liquor
- earthenware jug



UPPER FLOOR



Next to the stairs hangs 'mooimakersgoed' (beautifier goods) that has actually hung between the sails on special days.



- 1. From here, check out the collection of windmill paintings.**
- 2. Coffee and tea machine:**
tokens are available at the counter.
- 3. Flora in the Kalverpolder**
- 4. Fauna in the Kalverpolder**
- 5. Sit down and enjoy the view.**

6. Temporary exhibition

7. Cinema

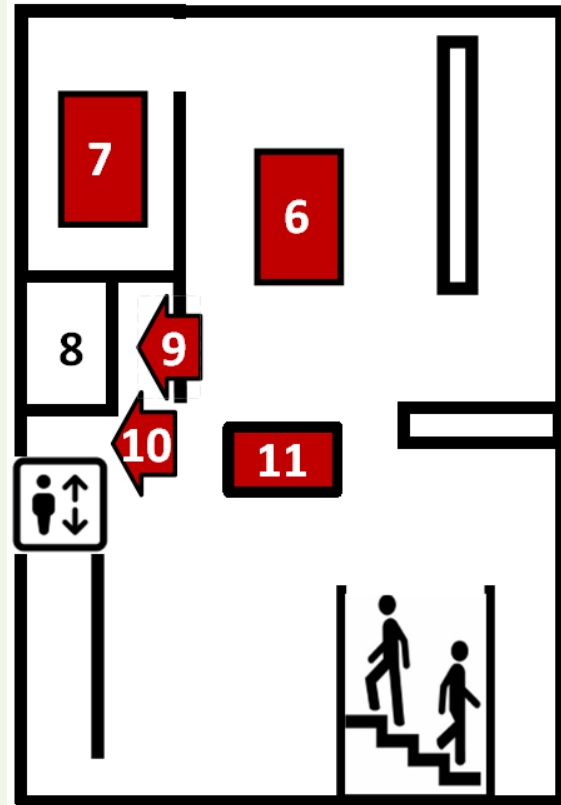
8. Private

**9. Some nameplates
of mills**

**10. A self-portrait of
Frans Mars**

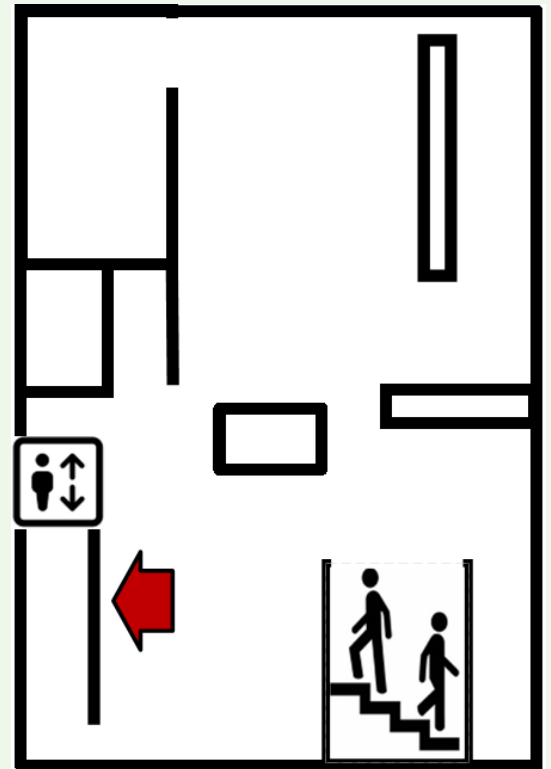
11. Model of sawyers at work

In Amsterdam, sawing was done by hand for a long time. The Zaan region flourished because of the invention by Cornelis van Uitgeest: applying the crankshaft in the mill so it could saw wood.

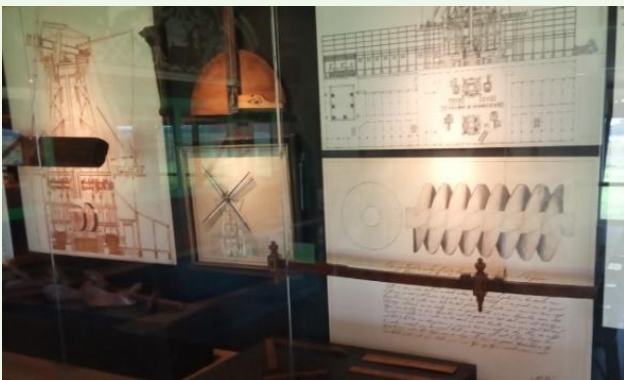


Millwrights

Model of
millwright Gorter
in Wormerveer



Parts of the mill were built, marked,
disassembled, then transported and
reassembled on site.



Drawings and tools,
used in the
construction of mills.



Flip through the animated book and watch the models move: *(from left to right)*

sawmill, edging stones and hemp beater.

Edge stones are heavy natural stones, originating from Belgium. They were used to grind oilseeds and dyes.

Wander around our museum.
Have fun.

For more info: